

# Praise Christian School Thursday COOPS and CLUBS

---

Co-op and clubs start on September 9, 2010.

Everyone is encouraged to meet at Young Life at 10:30 for a **picnic lunch on September 9**; then go to clubs. Drama and music clubs will present a program on **November 18** for the entire school.

Terrific Thursdays have experienced a *Paradigm Shift*.

What in the world is that? Well, think of a [Paradigm Shift](#) as a change from one way of thinking to another. It's a revolution, a transformation, a sort of metamorphosis. It just does not happen, but rather it is driven by agents of change. This is what happened to TT. Thursday activities now comprise of clubs. These clubs are driven by the interest of the students and families. No longer does a student sign up for activities between 12 and 2pm, but now may choose from many different clubs scattered throughout the day and the community. Each of these clubs is sponsored by Praise Christian School. Because of this we want to have a club sponsor (PCS parent) assigned to represent the school during each session.

What is a club?

CLUB: Part of Speech: *noun* Definition: social organization, a group of persons organized for a social, literary, athletic, or other purpose, an organization that offers its subscribers certain benefits: a needlework club; a horseback riding club, etc.

\*Need Assistant or \*Need Sponsor:

- Clubs are taught by quality instructors. However, it is best to have two adults in the class or a PCS sponsor, in case of an unexpected situation or emergency.
- If a club does not have an assistant listed and no one comes forth to offer it, the club could be removed from the offered list at time of registration.

Parents, this is your chance to learn a new activity. As a bonus, when you give your time, you are given a small thank you of \$20 per club per semester. Just think, this can help put some gas in your car or pay for some of the club fees!

The Bottom Line:

- Thursday Activities include CO-OPS and CLUBS for academics, fun, and enrichment.
- Students may take one or more co-op/club from 8am – 4pm.
- Each club has a Praise Christian School registration fee. This helps defray supplies and office expenses and provide sponsor credit.
- Teachers, Assistants and Sponsors receive a small stipend of \$20.00 per club sponsored.
- Some additional fees are required for certain clubs. See the descriptions below.
- For each of these clubs, the students must be serious about the activity. We will not have students sitting out of the activities to visit with their friends. The clubs allow for appropriate interaction.

**Apologia Biology Lab** is offered on Monday at 10am, due to the need of using microscopes. PCS school office building.

If you see a class that you would like to sponsor or assist in, please let Bonita Harris know as soon as possible. [bonitaharris@mchsi.com](mailto:bonitaharris@mchsi.com) or 251-599-2849

## K5-1<sup>st</sup>

### **Science activities, PE, and more:**

Teacher - Tammy Williamson  
(Tammy - science activities. Nichole - music)

Maximum: 8-10

Location: Young Life facilities

Need: *Nichole Raulerson*

## Grades: 2<sup>nd</sup> -5<sup>th</sup>

**Art:** Scrapbooking and Creative Cards - design, layout, creation, production. Great life-long leisure activity

Teacher - *Mary Louise Peterson*,  
Assistant – *Sandy shepherd*

Maximum: 10

**Fees:** \$15 per semester

Location: Mary Peterson's studio,  
3630 Arlington Oaks Dr.

**Drama:** activities related to skits, acting, etc.

Teachers - *Danielle Gardner* and  
*Barbara Phelps* (PCS mothers)

Maximum: 15

Location: Young Life facilities

Club will present on November 18.

**Elementary Music:** Voice, rhythm

Teacher - *Helen Benitez* (trained and certified in music education)

Maximum: 20 serious students

Club will present on November 18.

\*Need: Assistant

**Needlework:** kits, small projects on

plastic canvas with plastic needles

Teacher – *Karen Rodrick*

Maximum: 10 students

\*Need: Assistant

**PE:** President's Fitness Program and field sports

*Only to be offered if there are volunteers to teach.*

Maximum: 20

Location: Young Life field

\*Need: Teacher and Assistant

*Want to offer another class for this age group?*

## Grades: 6+

**Art:** Scrapbooking and Creative Cards - design, layout, creation,

production for scrapbooking and handcrafted cards. Great life-long leisure activity

Teacher - *Mary Louise Peterson*

Assistant - *Joy Nyeste??*

Maximum: 10

**Fees:** \$15 per semester

Location: Mary Peterson's studio,  
3630 Arlington Oaks Dr.

**Band:** Students must have command of their instrument.

Teacher: *Helen Benitez*

(trained/certified in music education)

Maximum: 20 serious students

Club will present on November 18.

\*Need: Assistant

**Bouquets and Bow:** COMMUNITY SERVICE ACTIVITY

Students will arrange silk and fresh flowers, make bows, corsages, fruit baskets, etc. Some projects will be delivered to assistant living and retirement homes.

Teacher - *Helen Hines* (PCS parent/professional florist)

Maximum: 8

Location: Young Life facilities

Assistant: *Stacy Huerta*

Donations needed: *small baskets, vases, wreaths – (grapevine or Christmas green), small clay pots, china cups and saucers, small gift boxes, silk flowers, greenery, Christmas greenery*

**Chess club:** Students must have basic knowledge of the game

Teacher - *Ed Harris*

Maximum: 6

Location: Young Life facilities

**Debate:** Proper debate and argument techniques. Students might compete against another school

Teacher - *Debbie Botsis* (PCS mother)

Maximum: 10

Location: Young Life facilities

\*Need: Assistant

**Drama:** production on Nov 18

Teachers - *Barbara Phelps* and  
*Danielle Gardner* (PCS mothers)

Maximum: 20 serious drama students

Location : Young Life facilities  
Club will present on November 18.

**Fencing:** techniques in fencing.  
Remember Zorro!

Teacher - *Alex Whalen* (Masters of Arms, 2002, Nationally Competitive, member of United States Fencing Association) (251) 463-4220

Ages: 13+

Minimum Students: 10

**Fees:** \$40 per month

Location : Young Life facilities

Alex has liability insurance

PCS Sponsor: *Stacy Huerta*

**Frisbee Golf:** *Only to be offered if there are volunteers to teach.*

Maximum: 15

Location: Young Life frisbee field

\*Need: Teacher and Assistant

**Jewelry:** Earrings, bracelets, and more.

Teacher - *Karen Rodrick* (Karen makes and sells similar items.)

Maximum: 10 students

Location: Young Life facilities

\*Need: Assistant

## All ages or Grades: 2<sup>nd</sup> -12<sup>th</sup>

**Bowling:**

PCS Sponsors: *Helen Hines* and  
*Debbie Botsis*.

Minimum: 4

**Fees:** \$5.00 per week.

Students may use own bowling shoes.

Location: Camellia Bowling Lanes  
(Frank) 125 Schillinger Road North  
Mobile, AL 36608-5019

(251) 639-1221

\*Need: Assistants

**Horseback Riding:** *Celisse's School of Equestrian Arts*

Teacher - *Krystin Celisse* and  
assistant (813) 732-0802 CSEA  
has liability insurance, requires  
helmet waiver, proper clothing and  
shoes.

Minimum: 6

**Fees:** \$100 per month

Location: next door to Young Life  
facilities

\*Need: PCS Sponsor

## HIGH SCHOOL

**Community Service:** Praise Family Church food pantry for those in need in our community.

*Pam Patrick* has been organizing this for some time, but as the need for these resources has grown, Pam's responsibilities have also. Our students can help by sorting and organizing the donated food each Thursday. High School students may earn community service credit and list it on the high school transcript.

=====

## Co-op Classes

***Mondays 10am at PCS offices***

### Apologia Biology Lab

16 sessions per year  
*Carolyn Battle, 251-661-2996*  
veteran home school mom and registered nurse has taught this class many times.

Payable to instructor:  
\$75 per semester, PCS students  
\$105 per semester  
for non-PCS  
students



Lab fees per year  
\$10. payable upfront

Textbook required

***Thursdays at Young Life facilities***

### Basic Digital Photography:

*Ida Thrasher, Thrasher Photography*  
*(251) 665-5309*



Payable to instructor:  
\$35 per month, PCS students  
\$45 per month, non-PCS students

**Skills taught:** how to use settings on your camera; when to use them;

rules of composition; how good composition makes a better photograph; different types of photography and more...

Required: digital camera, the manual for camera, three-ring notebook with pages to hold photos.

**Grade:** Weekly assignments covering these settings.

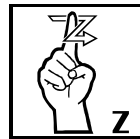
Compilations of weekly assignments (1/3 of the grade), notebook (1/3), matted and framed photograph taken during the semester (1/3).

Framed photography graded on these aspects for 10 points each: 1. Composition, 2. Impact, 3. Lighting, 4. Title, Name of photography, or Story Telling (refers to the image's ability to evoke imagination.), 5. Creativity, 6. Print Presentation, 7. Center of Interest, 8. Subject Matter (be appropriate to the story being told in the image.), 9. Color Balance, and 10. Technique (the approach used to create the image)

=====

### Sign Language:

*Teresa Druelle*  
*251-648-7992*



*See letter included.*

Payable to instructor:  
\$35 per month, PCS students  
\$45 per month, non-PCS students

Textbook to be determined

=====

### Writing classes:

*Bonita L. Harris, M. Ed*  
*251-599-2849*



Payable to PCS:  
\$95 per semester, PCS students  
\$125 per semester, non-PCS students

*These classes develop crucial age-appropriate writing skills. Literature is used in these classes, but for modeling of criteria taught, not for a literature credit.*

### Writing Strategies for the Middle School Student (grades 6-8)

9:25 - 10:35am

Genre taught: creative writing, poetry, expository, essay, persuasive, research

Textbook required

=====

### Advanced Writing Strategies for the High School Student

(grades 8-12) 8:00 - 9:15am

Higher-level skills taught: creative writing, poetry, expository, persuasive, essay, research writing.



*(This is an intense writing program which will ground your student in necessary high school skills and proper research writing and citation.)*

Textbook required

*FYI – Bonita has a master's degree in education with a current Alabama teacher's certificate. She stays up-to-date with college classes and workshops.*

*Please contact the individual co-op teacher to enroll your child. Registration will be completed at orientation – August 16.*

*Biology Lab: Carolyn Battle*  
*251-661-2996*

*Photography: Ida Thrasher*  
*251-665-5309*

*Sign Language: Teresa Druelle*  
*251-648-7992*

*Writing: Bonita L. Harris*  
251-599-2849

## **CONCERNING SIGN LANGUAGE CLASS**

To Whom It May Concern,

Several years ago, I became interested in sign language while home schooling my two daughters. I soon discovered that I had a love for the language; as a result, I studied and developed my skills for the next several years.

While living in Houston, Texas, I traveled with a sign group performing music at various events for about a year. After moving to Mobile, Alabama, I was a co-partner in setting up a Deaf Ministry at my church. There I interpreted off and on for 3 years, which involved interpreting the Sunday school class, music, and sermons.

Last summer, I completed a 6-week course at the University of Tennessee on interpreting. In the fall, I passed the Jacksonville State University written evaluation exam. More recently, I attended a one-week course in Atlanta, Ga. During this course, I focused on signing skills such as, processing, classifiers, production, voicing, and vocabulary. I have also completed ASL (American Sign Language) 101, 102, and 103 classes at Bishop State Community College. Attending workshops regularly helps me to maintain and improve my skills. The multiple aspects of sign language continue to fascinate me.

I have taught sign language to a home school group consisting of 12-17 students. In class, they learned vocabulary and Christian music. I hope to introduce your student to this language and culture which may for them, open a new world and a new way to worship.

Students are split into a) elementary and b) middle/high school groups. Each age will have music they enjoy.

“I will praise you as long as I live, and in your name I will lift up my hands.” Ps. 63:4

Teresa Druelle

[251-648-7992](tel:251-648-7992)